

# LOBSTER LAKE NEWS

November 2006

## Officers & Directors

**President:** John Stone 320-834-2972

**Vice President:** Bruce Strandskov  
320-885-9450

**Secretary:** Bonnie Huettl  
320-834-3287

**Treasurer:** Bev Paulin 320-834-2332

**Tall Timbers:** Jerry Ellis 320-834-6084

**Foslien's Bay, Norlana Lane &**

**Eternity Point:** Leo Spychalla  
320-834-3282

**Happy's Landing:** Harold Howard  
507-872-6649

**Kraffhofer's, Beauty Point & South**

**Side:** Bruce Strandskov 320-886-9450

**Wildridge, Rueben's Landing &**

**West End:** LeRoy Foslien  
320-524-2642

**Rowland's Cove, Wrolson's Estate,**

**Rockwood Shores & Hunter's Bay:**

Elizabeth Berens 320-834-2142

**Paulin's Paradise, Augdahl's &**

**Cherry Point:** Jim Barrett  
320-834-3441

**DCLA Representative:** Bonnie  
Huettl 320-834-3287

**Lake Captain:** Harvey Strom  
320-834-2893

## Committee Chairs:

Membership: Harriet Freding

Water Quality: Pete Onstad

Member At Large/Aquascaping:

Tom Flscher

Newsletter: Bev Paulin

## Members At Large:

Merrill Pederson 320-834-3188

Myron Lofquist 320-834-3217

## Rare Lake Visitors:

It is very rare to see these Trumpeter Swans in this area.

**Pete Onstad** was able to capture a photo of this pair during their short visit. They came on November 1st and were still here on the 3rd.



## THE INITIATIVE QUARTERLY

Central Minnesota Initiative Foundation, who provided the leadership and funds for our Lake Management Plan publishes a magazine quarterly. Their recent issue published jointly with Minnesota Waters, is devoted to stories about citizens making a difference in protecting and restoring healthy lakes and rivers in Central Minnesota. Entitled "True Blue: Preserving Our Greatest Gift", the magazine is being distributed statewide and includes a resource guide for water resource management. For a free issue go to <http://www.ifound.org/iq.php>.

## VIKINGLAND CHAPTER MUSKIES INC.

### ALEXANDRIA, MINNESOTA

Lobster Lake Association extends a special thanks to this organization. As in past years, they have given \$500 to our association to be used for walleye stocking. Also, for the past 6 or 7 years they have provided the funds for the rental and maintenance of the restroom facility at the public access. This cost is in excess of \$1,000.00 per year. If you have any contact with individuals from Muskies Inc., be sure to thank them.

## ANNUAL MEETING

The Lobster Lake Association meeting was held on May 6, 2006 at the LaGrand Township Hall. Over seventy lake association members were in attendance.

### Committee Reports:

Lake Captain-**Harvey Strom** reported that lake level is up 5 ½ inches from last year.

Water Quality-**Richard Knutson** reported on water quality trends and encouraged people to review pages 16-18 of report on web site.

DCLA- **John Stone** reported on activities of association.

Newsletter-A hands vote indicated that approximately half of members wanted to receive newsletter by regular mail which will be continued. If a member wants to receive it electronically, notify secretary for future delivery.

Planning and Zoning- **Bonnie Huettl** reported that she is attending all County Meetings. Members having questions should contact her.

### Old Business:

CLRS- **John Stone** gave report and encouraged people to attend monthly meetings. A summary of each meeting is posted on the Lobster Lake web site.

Walleye Stocking-**Bruce Strandkov** reported on activities being conducted to increase fish. environment and numbers. In 2005, the DNR stocked 20,480 fingerlings weighing 1,334 pounds.

Lake Management Plan- **John Stone** reported on work of various committees and that more volunteers are always needed.

### New Business:

Web Site- **Bonnie Huettl** reviewed the work that has been done and asked for suggestions on how the web site can be improved.

Area Meetings-These will be held in coming months. A schedule was posted.

Legislative Issues- Discussion was held on various bills. Everyone is encouraged to keep in contact with their legislators.

Army Worms-Decisions regarding spraying will be left up to each area of the lake.

Guest Speaker- **Kory Kosek** from the Douglas Soil and Water District spoke about various lakeshore issues and what everyone can do to help maintain the quality of the lake water.

## NEWS FROM YOUR PRESIDENT

This newsletter contains many short articles which you will find very informative. Please pay particular attention to the article on our website and be sure to check it out. Remember this is your association and the goal of the association is to preserve and protect our great natural resource, Lobster Lake. If you have any questions or comments, let me know. There is a contact link on the website. Thanks to all who have paid the dues. It is most appreciated. We would not be able to do all the activities including stocking walleyes without these funds. Have a great and safe winter.



## MEMBERSHIP AND DUES

The dues for the annual membership is \$20.00 which has been the same amount for many years. Your dues facilitate involvement in many projects and activities. Recently an invoice was mailed to everyone that had not paid there 2006 dues. We encourage your support and thank everyone who has paid. If you have any questions, please contact an officer.

## MEMBERSHIP DIRECTORY AND FISH MEASURING TUBE

Approximately every five years the association prints a new directory listing all the property owners around Lobster Lake with their address and phone numbers. Presently this is over 330 individuals. Also last year we provided a fish measuring tube to each member. If you paid your dues, either this year or last and did not receive 2005 directory or fish tube, please let your area director or an officer know and we will make sure you receive one.

## LOBSTER LAKE ASSOCIATION <http://www.lobsterlake.org>

Our website continues to be a very popular source of information with over 1300 contacts being made thus far. This site contains regular reports on the CLRSD meetings, upcoming events, contact information along with a number of valuable links. We thank **Bonnie Hueftl** and **Rob Graber** for their continuing efforts to monitoring the site. We welcome any suggestions or ideas that you may have.



## MINNESOTA WATERS

On January 1, 2006, Minnesota Lakes Association and the Rivers Council of Minnesota merged to become Minnesota Waters. Lobster Lake Association has been a member of MLA for many years. Minnesota Waters has an excellent website that has a lot of information on lakes, environment, etc. We encourage you to visit [www.minnesotawaters.org](http://www.minnesotawaters.org) for this information.



## LAKE MANAGEMENT PLAN

There continues to be a lot of activity on the various projects defined in the Lake Management Plan. The plan is explained in detail on our website. There is still a lot of work to be done which is an ongoing event. There are several projects for the public access that include milfoil signage and containers to collect unused fish line. We have the funds, just need more volunteers. No experience is needed as training will be provided. If you are interested in a project or need more information, contact President Stone. **Very seldom does it occur that an organization has excess money but the LLA does. All we need is projects and people to work on them. If projects are not completed, the funds will need to be returned.**

## WATER QUALITY MONITORING

by Pete Onstad

We continue to have several water quality monitoring activities on Lobster Lake. Thanks to the volunteers on the committee, there is always someone to help. This past summer the list of activities included:

- Taking Secchi disk readings weekly at four sites on the lake from May to mid September. **Hardy Hueftl**, who has taken Secchi disk readings for the last four years was again taking readings in the **West Bay** and **Mike and Melody O'Leary** were taking readings in the **East Bay**.
- Collecting water samples for chlorophyll-A and phosphorus at one location and take Secchi disk readings at all four locations. This is done monthly from May through September. The samples are sent to a lab in Detroit Lakes for processing. You can see the results by visiting the lab's web site: [www.rmbel.info/](http://www.rmbel.info/).
- We wanted to monitor the stream inlets and outlets on the lake but due to a monitoring equipment problem, we will have to wait until next year. The problem with the equipment has been fixed.
- **Bonnie Hueftl, John Stone** and **Pete Onstad** attended a three-day workshop on *Developing a Water Monitoring Plan*. The workshop was held at Deep Portage Conference Center near Hackensack, MN. There were six groups from around the state that were invited to attend. Three of the groups were from lake associations and the other three represented river and stream groups. The sponsoring group who conducted the workshop was **Minnesota Waters**, an organization formed this year by combining the Minnesota Lakes Association (MLA) and the Rivers Council of Minnesota (RCM). You can visit the Minnesota Waters web site at [www.minnesotawaters.org](http://www.minnesotawaters.org), they put out a nice news letter.



We now have 20 years of Secchi disk data on Lobster Lake. The data will be available for everyone to see on our web site [www.lobsterlake.org](http://www.lobsterlake.org).

### AREA MEETINGS

The Lobster Lake Association is organized to have an annual meeting the first Saturday in May with each area to have an area meeting sometime during the summer months. The purpose of these meetings is to discuss concerns of your area, a report on lake activities and a time for socializing. This summer, Jim Barrett, Liz Berens, Bruce Strandskov and Jerry Ellis hosted meetings for there areas. A good time was had by all. If you have questions about your area meeting, contact your area director or a lake association officer.

### 2007 ANNUAL MEETING

Mark your calendar as our 2007 annual meeting will be held on Saturday, May 5. Any suggestions for the agenda, please contact John Stone. This is your meeting and the Board wants the meeting to be informative and beneficial for you.

## **Douglas County Lake Association (DCLA)**

by Bonnie Huettl

**Bonnie Huettl** is now the representative for LLA at Douglas County Lakes Association. They meet monthly the 2nd Wed at the Public Works Bldg at 4:30 p.m...

Progress is being made in getting DCLA more publicity. There is a new Committee formed - Strategic Planning and Communications - which is responsible for being providing the newspaper articles in the Echo Press and the publication of a brochure "Owning Lakeshore in Douglas County". This brochure is provided to all realty companies, landscapers, builders and at the Land & Resource Dept and any other outlet for distribution we can find. A copy of it is included with this newsletter. DCLA have printed 5000 copies for all lake associations to provide to their members. The DCLA is also on KXRA "Open Line" in the summer months. Continuing discussions are being held with the Vikingland Builders Assoc. to discuss common issues in Douglas County.

This year the Day at the Lakes will be combined with the Chamber of Commerce Awake the Lakes. We hope to see more and more people at these events by combining the effort. SWCD will still be involved. Much more work is needed. If you can volunteer some time we can always use help!

## **Update on Lobster Lake Association Lake Mapping Project**

by Erick Highum - Chair

As of October 23, 2007 all committee members of the LLA Shoreline Mapping project have reported taking pictures of the sections of the shoreline to which they were assigned. We are in the process of starting the next phase of the project which encompasses putting the digital photos, and their corresponding parcel numbers, on the LLA website.

## **BOWFISHING ON LOBSTER**

If you noticed some unusual looking boats on the lake this summer, they most likely were members of the Minnesota based bowfishing organization called LLBA-Land-O-Lakes bowfishing Association which has close to 100 members of which a number of them are from the Alexandria area. The boats have decks built out over the front to provide a good view to spot and shoot carp with bow and arrows. The members of the group took 120 large carp out of the lake this summer. There is a website called BOWFISHUSA.COM that has a lot of good topics on carp in general and the equipment used to harvest them. Minnesota is implementing a trial period for night bowfishing beginning June 1, 2007 on some lakes in the state. If anyone wants more information on this activity, contact Tim Lais in Alexandria.



**CENTRAL LAKES REGION SANITARY DISTRICT [CLRSD]**

Several months ago the district went back to the original three phases rather than being just one large unit. This was done for the purpose of obtaining financing and using various treatment systems. The phases are as follows:

- Phase I: Lobster Lake Area
- Phase II: Brandon Township Area
- Phase III: Miltona and Irene Area

**Phase I,**

A resolution has been passed stating that the CLRSD Board formally requests that the Alexandria Lakes Regional Sanitary District [ALRSD] consent to treat wastewater generated by users of the proposed Lobster Lake wastewater collection system subject to such conditions as may be agreed upon by the parties and that CLRSD Board also requests that ALSAD consent to operate and maintain the proposed Lobster Lake wastewater collection system subject to such conditions as may be agreed upon by the parties. This resolution has been forwarded to ALSAD for there consideration at there November meeting. A salary survey is presently being conducted for the phase II area, if this is feasible for that area, a survey may be done for this area to determine if a low interest loan from USDA is possible for the Lobster Lake area.

**Phase II**

Brandon Township reduced the area to be served from over 400 units to approximately 150 units. With this reduction it was not economically feasible to construct the original project. The engineers are presently looking at a cluster system which would consist of 6 areas, each having there own treatment facility similar to a mound system.

A salary survey is in process to determine if this area is eligible for a low interest loan from USDA. The results of the survey should be known by the December meeting.

**Phase III**

WSN is working on design of treatment facility, design of collection system and land easements. Appraisals for the land to be used as treatment facility have been done. Bonds were issued for \$1.6 million on September 21 to cover the interim financing of the Survey and Design project. The estimated cost of the project is \$19.4 million. Construction to start in 2007. A resolution was passed for CLRSD to apply for a loan from Minnesota Water Pollution Control Revolving Fund in the amount of \$19.406 million or as-bid cost of the project. Another resolution will be forwarded to ALSAD requesting them to be the operators of the treatment facility. Meetings continue with the cities of Miltona and Carlos to determine to what extent the various groups can work together. A new development of over 70 units that presently is outside the CLRSD will be requesting to be part of the CLRSD.

The levy for 2007 was set at \$75,000.00. This compares to \$50,000.00 in 2006 and \$85,000.00 in 2005. The funds from the levy are used by the District to cover current operating expenses.

The CLRSD board meets on the first Thursday of each month at 7:30 p.m. at the Leaf Valley Township Hall. Everyone is invited.



## County Update.....

By Bonnie Huettl

Many variances and conditional use permits have been granted, and I am still attending the meetings. The uphill battle continues, but some progress has been made. The Minor Subdivision Ordinance has been revised! Now any plats that come to the county for approval that touch any water, lake, river, stream or wetland are required to come before the Planning Commission for public comment. Sue Engstrom, from Douglas County Lakes Association and I brought the issue forward. It was uncovered as a result of diligent attendance at **all** of the county Commissioner and Planning Commission meetings by us, when a plat we hadn't seen previously was approved at a regular business meeting that is where the public is not allowed speak. The plat should have gone through the Minor Subdivision process but it didn't. This error resulted in a law suit being filed on behalf of Lake Darling Assn on this issue. The Sensitive Features Criteria was also passed and added to the subdivision ordinances. This will require any proposed development that is adjacent to sensitive areas within **any** lake go through the Development Review Team process. These areas are described on the County's web site in the GIS link. Douglas County has been dealing (or not) with this for many years, as 'sensitive areas' is mentioned in an ordinance, but there were no define criteria! Again with a constant reminder that it was not adopted but, in the ordinance, attention was brought to the issue and steps were taken to adopt the criteria. It took 4 months of prodding and many presentations. Finally at the very last presentation to the board, Commissioner Dan Olson suggested that the Soil and Water, Douglas County Lakes Association, Department of Natural Resources and Land & Resource get together to come to a compromise in the language. It took 1 hour and 3 e mails and we were done! Most of the work was done by Jerry Haggemiller and Ben Olsen. Thanks!

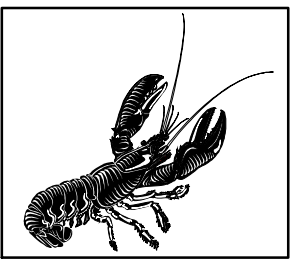
There is also a discussion going on regarding the Comprehensive Plan and the County Ordinances. State law says the Ordinances must enforce the Comp Plan, but ours doesn't because some ordinances were passed after 1998 when the Plan was adopted. Ben Oleson and Rebecca are working on these changes as well. Also being discussed is an error made in resort conversions. This is complicated, but if you wish more info call me.

There is now a nation wide search for a new Land & Resource Director. There were three applicants the last time and none of them were what the Commissioners were looking for, including the current Interim Director. Sue and I attended the interviews, but had no input as it should be. The county is now advertising nationally. This search becomes more difficult as time goes on and we have no Director as work continues to pile up! I will keep you posted.

Pervious Pavers have also been an issue and have been discussed at length and still is not very clear. I could only ferret out that unless the property is over the 25% and a permit is applied for to add impervious surface it doesn't apply. New or lots under the 25% are not affected. Call Rebecca at Land and Resource.

Shirley Schultz, A Planning Commission member, passed away this fall. A search for a replacement was conducted in the District 5 area, I have not met the new person but he is on the Sauk River Watershed District Board.

Question?? Call Bonnie Huettl 834-3287



**Lobster Lake Association**

**P.O.Box 32**

**Alexandria, MN 56308**

## **Minnesota Fun Factoids**

- According to the US Geological Survey: "One inch of rain on an area of pavement or roof measuring just 26X60 feet equals about 1,000 gallons of water runoff."
- The five most popular Minnesota lake names are: Mud Lake, Long Lake, Rice Lake, Bass Lake, Round Lake.
- Minnesota is ranked first for the number of recreational watercraft per capita: One boat for every six residents.
- The name "Minnesota" comes from the Dakota Indian name "Minisota," which means sky-tinted water.
- Do more bears or loons live in Minnesota?

*Answer: Bears, by far: 27,000 bears to 12,000 loons*

More Minnesota Facts and Figures at <http://www.dnr.state.mn.us/faq/mnfacts/index.html>